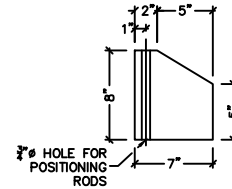
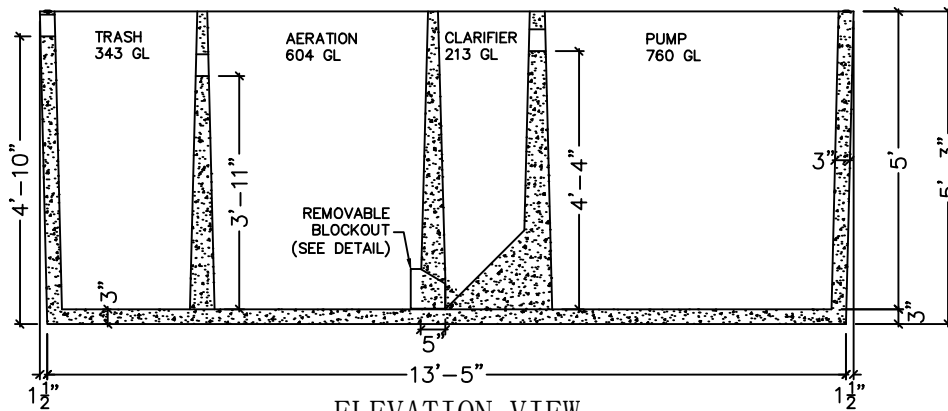
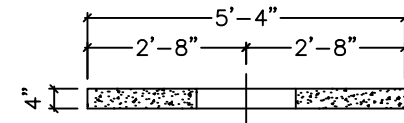
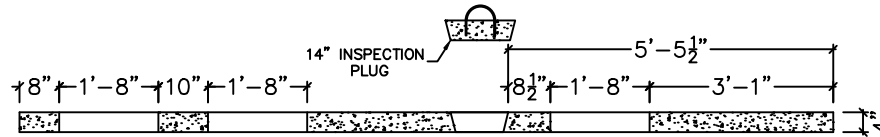
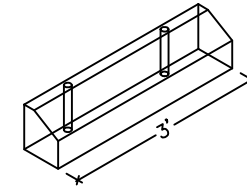


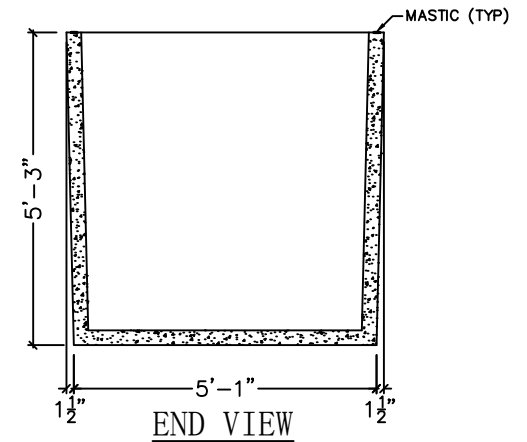
PLAN VIEW



REMOVABLE  
BLOCKOUT DETAIL



ELEVATION VIEW



END VIEW

NOTES:

1. 28-DAY COMPRESSION STRENGTH = 5000 psi
2. ALL REINFORCING STEEL IS TO BE UNCOATED GRADE 60.
3. MINIMUM #3 BAR LAP IS NOT TO BE LESS THAN 1'-6".



PHONE: 254-296-6100  
FAX: 254-296-6101

901 N. HIGHWAY 77  
HILLSBORO, TX - 76645

CXT, INC. - HILLSBORO

PROJECT #:

HILLSBORO, TX

B-550 COMBO TANK

DRAWN BY: ETL DATE: 6/28/16 CHECKED BY: KJK CHECKED DATE: 3/12/18 REV BY: HMC

DWG. NO.	REV	DESCRIPTION	DATE
1	5	REMOVED 4" SDR35 COUPLING OVER PUMP TANK	3/26/19
	4	CHANGED INSPECTION PLUG DIMENSION	2/18/18
	3	CHANGED GRAY PIPE TO 1-1/2" ACROSS FROM COUPLER	6/15/18
	2	CHANGED A FEW SIZES IN THE DIMENSIONS	3/12/18
	1	MOVED PENETRATIONS & ADDED 2 HOLES	2/6/18