

# FLUSH RESTROOM WITH CONCESSION

**CXT<sup>®</sup>** flush restroom with concession buildings are engineered and designed for long life in extreme conditions.

- Built to Look Great and Designed to Last
- Simple to Install and Ready to Use
- Easy to Maintain and Vandal Resistant
- Pre-Engineered
- Tougher Than Kits, Block or Steel
- Installed in a Single Day

## Keystone

3 (2 ADA) toilets | 1 urinal | 2 sinks

6' roll-up concession door

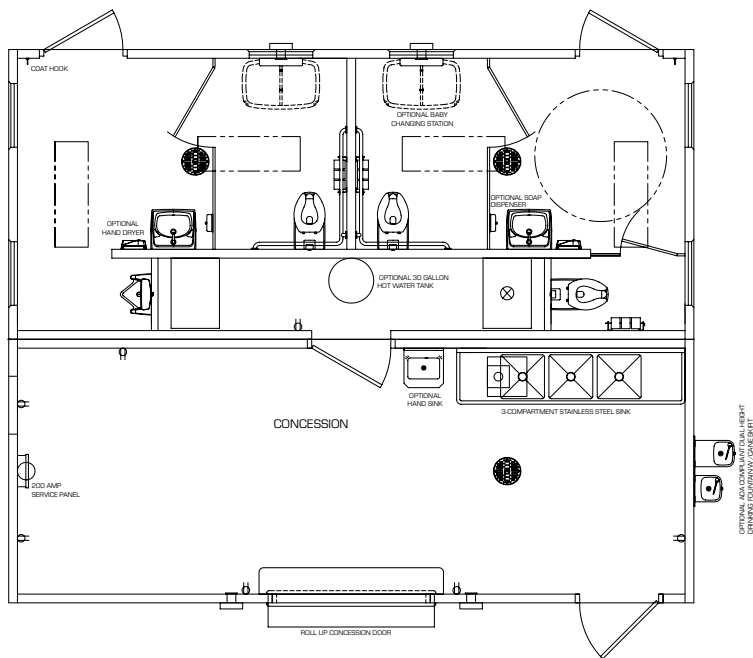
3 compartment stainless steel sink



- » Canyon Clay simulated Brick walls with Camelback accent stripe
- » Rock Garden simulated Ribbed Metal roof
- » Enamel Brown trim
- » Roll up concession door
- » Optional drinking fountain



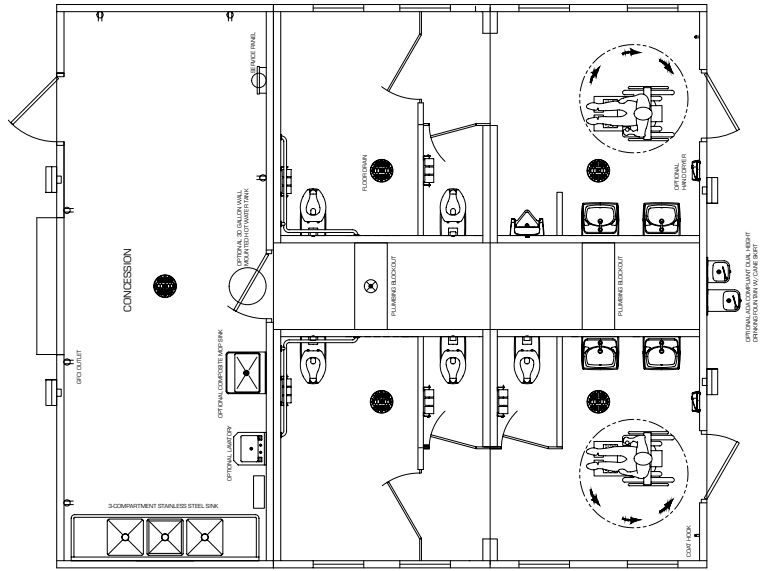
- Meets UFAS, ADA and California Title 24 requirements
- Vandal resistant building and toilet components
- 4" thick steel reinforced concrete walls
- 5" thick steel reinforced concrete roof and floors
- Quick installation and hookup at the job site
- Will not rot, rust or burn
- Easily cleaned with a brush and warm soapy water
- Available in 28 different colors
- Custom textures and colors also available



www.cxtinc.com  
800.696.5766

## Pomona

- 4 (2 ADA) toilets | 1 urinal | 4 sinks
- 6' roll-up concession door
- 3 compartment stainless steel sink



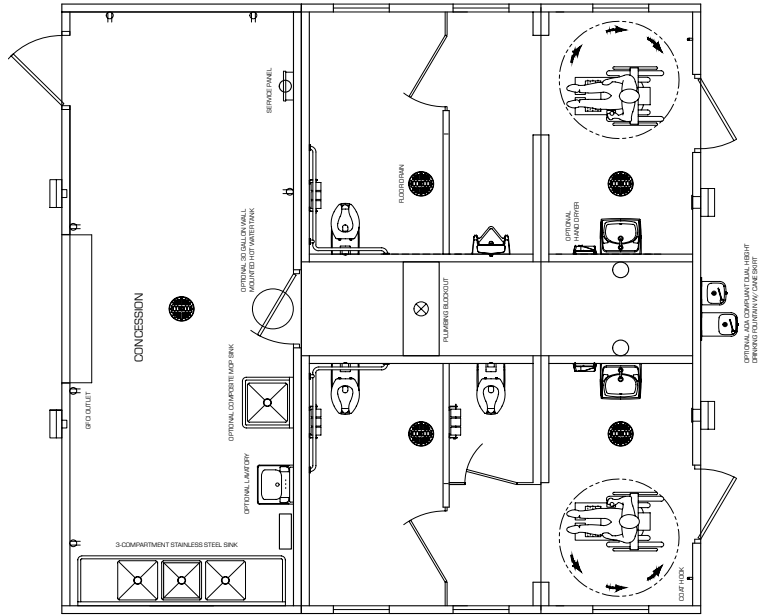
### Shown:

- » Sand Beige Split Face Block walls
- » Toasted Almond Cedar Shake roof
- » Roll up concession door



## Malibu

- 3 (2 ADA) toilets | 1 urinal | 2 sinks
- 6' roll-up concession door
- 3 compartment stainless steel sink



### Shown:

- » Toasted Almond Barnwood upper walls
- » Mountain Blend Fieldstone lower walls
- » Toasted Almond Cedar Shake roof
- » Roll up concession door



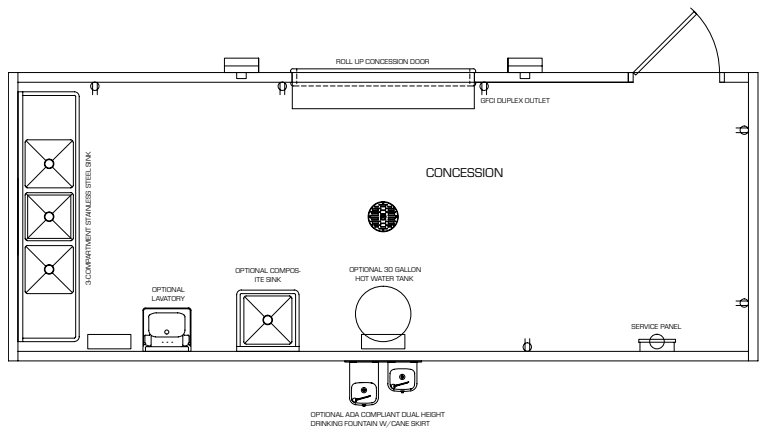


## Fontana

Concession only building

6' roll-up concession door

3 compartment stainless steel sink



Shown:

- » Navy & Gold (custom) Split Face Block walls
- » Navy Cedar Shake roof
- » Three (optional) roll up concession door

## UTILITIES

- Pre-wired, pre-plumbed, and tested before shipping to meet local code requirements.
- Concealed within the chase/storage area for easy hook up and maintenance, and to reduce vandalism.

## HOOK UP AND INSTALLATION

- Minimal site work is required.
- Water, sewage and electrical utility lines are stubbed up through the prepared base material to match up with the utility blockout within the floor of the chase area.
- Hookup of the three utility lines can be completed in a matter of hours.



**ENGINEERED TO  
WITHSTAND SNOW, WIND,  
WATER AND ZONE-4  
SEISMIC LOADS**



[www.cxtinc.com](http://www.cxtinc.com)  
800.696.5766

CXT Incorporated is a wholly owned subsidiary of  
L.B. Foster Company. © 2018 CXT Incorporated

