



## VAULT WATERLESS RESTROOMS

### SIMPLE TO INSTALL

CXT® buildings require minimal site preparation and can typically be in use on the day of installation.

### READY TO USE

Our buildings are prefabricated and delivered complete and ready to use.

### EASY TO MAINTAIN

Our interiors are designed to resist abusive wear and can be cleaned quickly with warm soapy water and a brush.



### SINGLE VAULT



CASCADIAN



ROCKY MOUNTAIN



GUNNISON

### DOUBLE VAULT



TIOGA



DOUBLE ROCKY MOUNTAIN



DOUBLE CASCADIAN

*Engineered to withstand snow, wind, flood, and zone-4 seismic loads.*

## SWEET SMELLING TECHNOLOGY

- Designed and placed to ensure an unobstructed airflow over the top of the vent stack for passive ventilation.
- The location of the wall vent and orientation of the building takes advantage of the unobstructed airflow.
- The positive continual air flow carries the vault air out through the vent pipe keeping the building odor-free.



- Vandal resistant building and toilet components
- 4" thick steel reinforced concrete walls
- 5" thick steel reinforced concrete roof and floors
- Will not rot, rust or burn
- Available in 28 different colors
- Custom textures and colors also available



Precast Roof Slab

#3 Reinforcing  
Perimeter Bar

4x4xW8xW8 Welded  
Wire Fabric

3/8" Studded Steel  
Weld Plates

5000 PSI Concrete

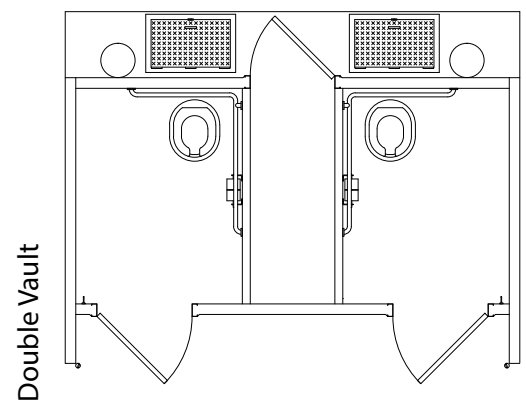
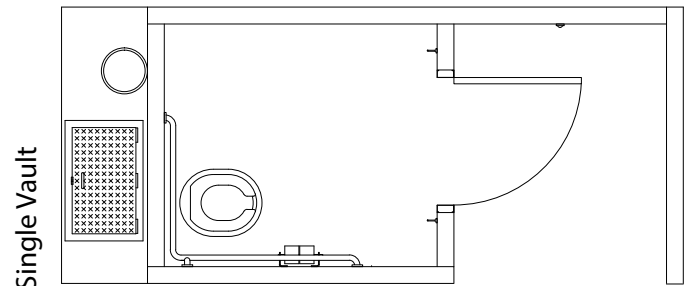
Precast Exterior  
Wall Panel

Precast Floor Slab



## VAULT

- Installed below ground level with vault dimensions that match the perimeter of the building to provide a stable structure that supports the full weight of the building.
- Each holds up to 1,000 gallons of waste (approximately 15,000 uses).
- Sloped so that waste will drain to the clean out end.
- Lined with a black polyethylene liner that is cast into the side walls of the concrete vault using dovetail embeds.



Floor plans for reference only.



www.cxtinc.com ▪ 800.696.5766

© 2021 CXT Incorporated All rights reserved. CXT Incorporated is a wholly owned subsidiary of L.B. Foster Company.

